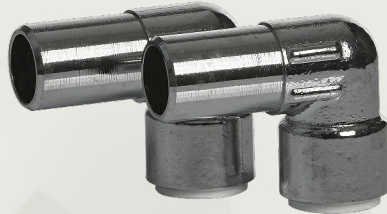
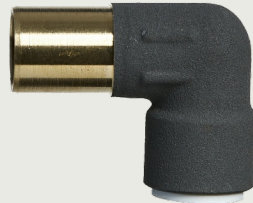


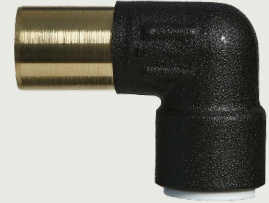
Elevate Your Plumbing with Tower Push-Fit Elbows 15mm Male to 10mm Female - Now in Stunning Finishes!



ELB1
(Chrome)



ELB1-A
(Anthracite)



ELB1-B
(Black)

- ▶ Are you ready to revolutionize your plumbing projects with style and ease?
- ▶ Say goodbye to soldering hassles and plumbing headaches!
- ▶ Discover the ultimate solution that combines function with fashion!

Introducing our 15mm Male to 10mm Female Brass Push-Fit Elbow, now available in captivating Anthracite, sleek Black, and timeless Chrome finishes. It's not just a plumbing fitting; it's a statement of excellence.

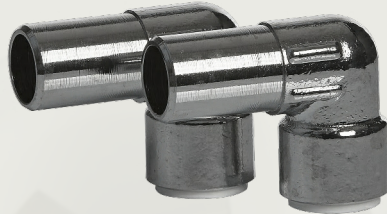
- **Effortless Installation:** With our push-fit design, installation is a breeze. No more messy soldering or gluing. Just push, and you're done. Your plumbing projects just got easier and more stylish.
- **Bulletproof Reliability:** Crafted from high-quality brass, this elbow stands the test of time. It's corrosion-resistant, ensuring your plumbing stays leak-free and looks fantastic.
- **Versatile Powerhouse:** From residential to commercial applications, from hot water to cold, our Brass Push-Fit Elbow has you covered. It's the perfect blend of versatility and sophistication.
- **Watertight Perfection:** Precision engineering guarantees a watertight seal every time. No more worrying about leaks—just dependable, stylish performance.
- **Saves You Time and Money:** Time is money, and our elbow saves you both. Finish projects faster without compromising quality. Plus, it's available in handy packs to suit your needs.
- **Professional-Grade:** Elevate your plumbing work with a fitting that exceeds industry standards. It's a professional-grade elbow that adds a touch of class to your toolkit.
- **DIY Dream:** Whether you're a pro or a DIY enthusiast, this elbow simplifies your tasks. It's a game-changer for beginners and a time-saver for experts.
- **Stunning Finishes:** Choose from Anthracite, Black, or Chrome finishes to match your style and decor. The Chrome version comes in a convenient pack of two, while the other exquisite colours are available individually.

Upgrade your plumbing arsenal today with the 15mm Male to 10mm Female Brass Push-Fit Elbow in a finish that suits your taste. Elevate your plumbing projects with a touch of elegance and efficiency.

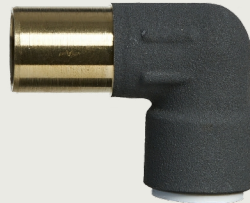
Don't miss out! Experience the ease, reliability, and unmatched style of our Brass Push-Fit Elbows in stunning finishes. It's time to make a statement in plumbing.

Order now and discover the perfect fusion of function and fashion in plumbing fittings!

Elevate Your Plumbing with Tower Push-Fit Elbows 15mm Male to 10mm Female - Now in Stunning Finishes!



ELB1
(Chrome)



ELB1-A
(Anthracite)



ELB1-B
(Black)

Discover the Radiator Valve Stem Elbow, a versatile 90° push-fit stem elbow designed for universal compatibility with 15mm thermostatic radiator valves. This removable fitting is engineered to seamlessly integrate with most major radiator valve brands, ensuring a hassle-free installation process. Crafted from high-quality brass with a choice of sleek Chrome, contemporary Anthracite, or bold Black finishes, this valve stem elbow not only enhances the functionality of your heating system but also adds an elegant touch to your radiator setup.

Product Specification:

Colour Options:

Choose from ELB1 (Chrome), ELB1-A (Anthracite), or ELB1-B (Black) to match your decor seamlessly.

Connection:

Featuring a convenient push-fit connection, installation is a breeze, saving you time and effort.

Finish:

Select the finish that suits your style - whether it's the classic Chrome, the modern Anthracite, or the bold Black.

Material:

Crafted from durable brass, this elbow promises longevity and reliability for your heating system.

Pack Size:

Available in a variety of pack sizes - Chrome (1 pair), Anthracite (single), and Black (single) - to suit your specific needs.

Size:

The elbow has a 15mm size, making it suitable for a wide range of applications.

Type:

Designed as a Push-Fit Valve Elbow, it simplifies the installation process and ensures a secure fit.

Valve Shape:

With a 90° Angle/Elbow, this fitting optimises the flow of water in your heating system.

Elevate your heating system's performance and aesthetic with the Radiator Valve Stem Elbow. Choose from three stunning finishes to match your decor: Chrome, Anthracite, or Black. Enjoy the convenience of a push-fit connection and the durability of high-quality brass construction. Upgrade your heating system effortlessly with this versatile and elegant valve elbow.